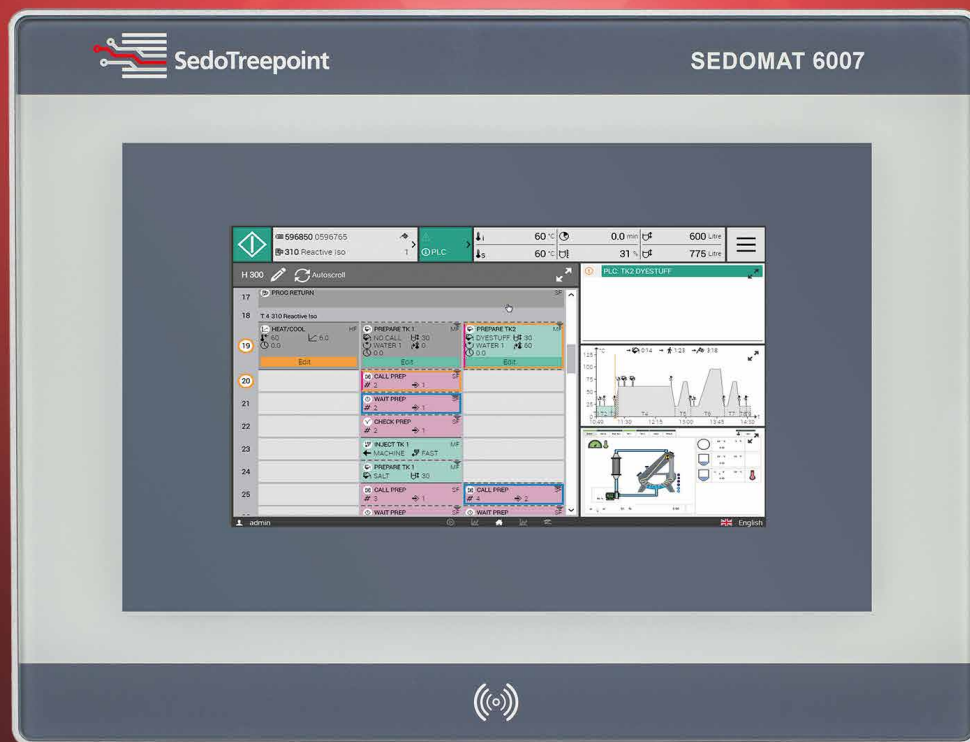


## Cost-effective controller for a high degree automation



### Designed for the Smart Factory

The Sedomat 6007 is a cost-effective solution for a high degree automation specially designed to meet the requirements of Industry 4.0. It comes with a user-friendly 7" touch display and is equipped with Modbus RTU (RS232). It already includes a PLC which can be adapted with programming tools and can be optionally equipped with internal and external I/O boards to meet the different requirements of yarn, fabric and other types of dyeing machines.

A more sustainable competitive production can be realized due to the integration of SedoMaster and other dye house systems via Ethernet and OPC UA. Also, data acquisition or the use of Sedomat 6007 as production client is possible by optional RFID support.

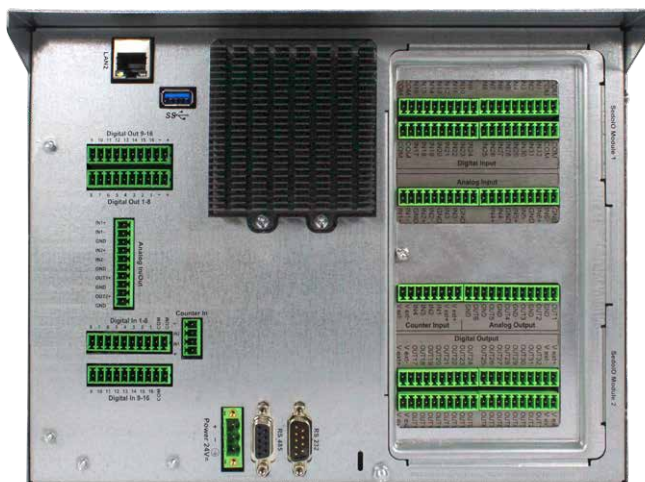
Like all Sedo Treepoint controllers the Sedomat 6007 guarantees high quality and reliability in rugged production environments.

## Internal I/O board options

- Embedded internal I/O board IO16/2 with 16 digital I/Os, 4 software counters (2kHz), 2 hardware counters (10 kHz), 2 analog inputs, 2 analog outputs
- Internal I/O board 32/6 with 32 digital I/Os, 4 software counters (2 kHz), 4 hardware counters (10 kHz), 6 analog inputs, 6 analog outputs

Specifications		Sedomat 6007
Capacitive touch display		7"
Bus systems	CANopen®	-
	PROFIBUS DP®	-
	Modbus RTU (RS232/485)*	✓
Internal I/O boards	I/O board IO16/2*	1
	I/O board IO32/6*	1
SedoIO	Internal modules*	2
	External modules*	1
Connectors	RS232 interface	✓
	RS485 interface	✓
Ethernet (RJ45), 1 GBit/s		1
USB 2.0 port / USB 3.1 port		- / 1
Wi-Fi		-
RFID reader*		✓
mPCIe slot		-
mSATA slot		-
IP67 protection		✓
Power supply 24 V DC, 1.0 A		✓
Ambient temperature 0 - 60 °C (32 - 140 °F)		✓
Dimensions (wxhxd)		285 x 216 x 65 mm
Panel cut-out (wxh)		270 x 196 mm ± 1 mm

\*Optional configuration, customized to individual needs.



▲ Connections and interfaces Sedomat 6007

Head office:  
**Sedo Treepoint GmbH, Germany**  
 Neuwies 1, D-35794 Mengerskirchen  
 Phone: + 49 6476 31-0, Fax: +49 6476 31-31  
[sedo@sedo-treepoint.com](mailto:sedo@sedo-treepoint.com)

Sedo Treepoint, Switzerland  
 Phone: + 41 43 488 11 88, Fax: +41 43 488 11 89  
[switzerland@sedo-treepoint.com](mailto:switzerland@sedo-treepoint.com)

Sedo Treepoint, Belgium  
[belgium@sedo-treepoint.com](mailto:belgium@sedo-treepoint.com)

Sedo Treepoint, China  
[china@sedo-treepoint.com](mailto:china@sedo-treepoint.com)

Sedo Treepoint, India  
[india@sedo-treepoint.com](mailto:india@sedo-treepoint.com)

Sedo Treepoint, Singapore  
[singapore@sedo-treepoint.com](mailto:singapore@sedo-treepoint.com)

Sedo Treepoint, USA  
[usa@sedo-treepoint.com](mailto:usa@sedo-treepoint.com)

Technical specifications are subject to change without prior notice.