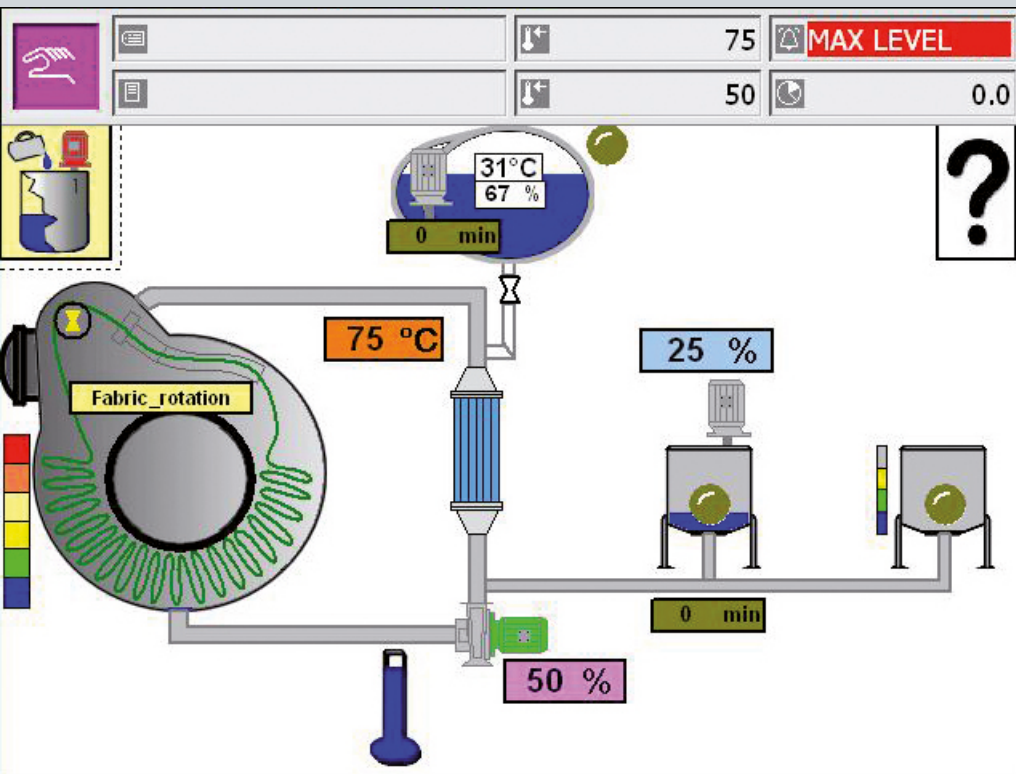


Your fast and easy solution for jet and yarn machines



Plug'n'Play
easy installation and connection



You are looking for an easy to install controller for a yarn or jet dyeing machine? Your budget is limited? Then we have the right solution for you!

Plug'n'Play for Sedomat is a software package already installed on a Sedomat 1800, Sedomat 2500 or Sedomat 5500. It includes a preconfigured and pre-programmed machine drawing, PLC program and machine configuration. You can just install the Sedomat, adapt some settings and start your first batch!

It is ideally suited for most yarn and jet dye machines with up to four tanks. Select the controller type and the quantity of inputs and outputs according to your needs.

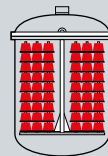
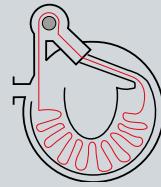
Supports a lot of machine functions

Integrated functionality:

- Yarn and jet machines with up to four tanks.
- Analog or digital level for machine and side tanks
- Analog speed settings for main pump in %.
- Up to three water- and drain types implemented.
- Dosing from side tank with on/off or analog regulation.
- Dosing via level or pulses.
- Temperature control in on/off- or analog regulation.
- Fill and rinse machine with water counter.
- Water consumption via water counter.
- Re-start after power drop.
- Units can be set to different standards (°C, °F, liters, gallons).
- Flexible coupling of up to four machines.
- Dispenser connection via SedoMaster.

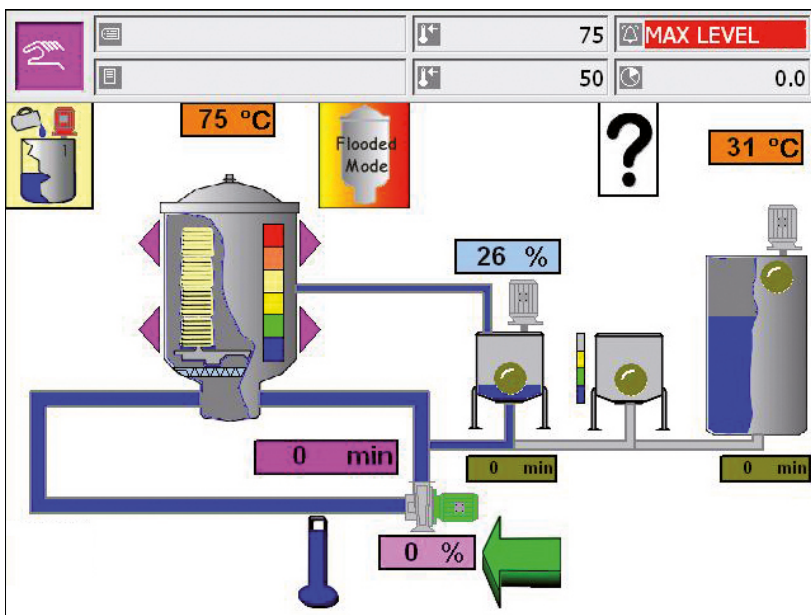
Integrated functionality:

- **For jet machines:**
 - Nozzle pressure control.
 - Fabric rotation control for up to six channels (tangle control).
 - Analog speed settings for reel (m/min).
 - Seam detection.
 - Measurement of cycle time.
 - Rinsing, heating and dosing with cycles.
- **For yarn machines:**
 - Fully flooded or air pad mode.
 - Differential pressure control.
 - Flow direction control (in-out/out-in).
- Can also be used for laboratory apparatus.



Benefits:

- No extra installation cost for a service technician
- Technical installation can be done by yourself, support via phone, email and online.
- Most hardware (safety) lockings are already integrated in the PLC software.
- All languages possible.
- Available for Sedomat 1800 (fix inputs/outputs), all Sedomat 2500 and Sedomat 5500 versions with 8, 16, 32 and 48 digital inputs/outputs. For Sedomat 2500 all versions can be ordered with Profibus DP option. The ordered versions depends on the number of required inputs/outputs.
- We recommend to reserve some I/O's for further extensions
- For controller specifications see Sedomat 1800, Sedomat 2500 and Sedomat 5500 brochure.



Machine visualization for yarn machine

Head office:
Sedo Treepoint GmbH, Germany
 Neuwies 1, D-35794 Mengerskirchen
 Phone: + 49 6476 31-0, Fax: +49 6476 31-31
sedo@sedo-treepoint.com

Sedo Treepoint, Switzerland
 Phone: + 41 43 488 11 88, Fax: +41 43 488 11 89
switzerland@sedo-treepoint.com

Sedo Treepoint, Belgium
belgium@sedo-treepoint.com

Sedo Treepoint, Brazil
brazil@sedo-treepoint.com

Sedo Treepoint, China
china@sedo-treepoint.com

Sedo Treepoint, India
india@sedo-treepoint.com

Sedo Treepoint, Italy
italy@sedo-treepoint.com

Sedo Treepoint, Singapore
singapore@sedo-treepoint.com

Sedo Treepoint, USA
usa@sedo-treepoint.com

Technical specifications are subject to change without prior notice.