

## The new standard in dyeing and finishing



### Designed for the smart factory

The brand new Sedomat 8000 controller range is specially designed to meet the latest requirements of Industry 4.0 and more. It is developed to match future standards through its high flexibility. The controllers contain all the benefits of the well proven Sedomat controllers combined with internal WiFi, RFID, flexible field bus and a high number of modular internal and external in- and outputs. Energy counters can be directly connected via the high number of standardized connections.

### Top-level, high quality products

Solutions for dyeing and finishing automation need expert systems. The Sedomat 8000 series brings together the knowledge of more than 40 years machine automation in dyeing and finishing. It is tested for harsh environments and build according to the highest quality standards. The high performance hardware offers an impressive user experience.



## Connectivity

In the Sedomat 8000 series internal I/Os and internal SedoIO board can be built in. External SedoIO-Modules can be connected via interfaces like CANopen®, PROFIBUS DP® and Modbus RTU. This way, the controllers can be customized to the requirements starting from simple lab machine to complex dyeing and finishing machines.

SedoIO modules offer perfect flexible options to select the necessary I/O needs.

Ethernet TCP/IP network integration for SedoMaster and communication with other dye house systems are available. OPC UA for easy and open data exchange on machine level (M2M) and with supervisory systems.

## Web based

Web based remote service and control can be guaranteed everywhere worldwide via e.g. optional SIM card. In order to meet the highest quality standards, production must be monitorable in real time. The SedoAPP is a powerful tool that allows real-time control from anywhere at any time.

## Flexibility and look ahead

With flexible, parallel functions, there are no limits to productivity. With the Sedomat 8000 series, batches can be processed simultaneously and a preview of several subsequent batches can be displayed.

## Unlimited applications

Master/slave operation, logging and visualization of process data, support of languages, support of dosing curves, data logging via cloud services, integration with chemical dispensing and automation of dye kitchen, ...

## Sedomat 8007

The compact Sedomat 8007 with a 7" touch display is specially designed for lab machines and data acquisition. It can be equipped with an internal I/O board or can be expanded with external SedoIO modules.

## Sedomat 8010

The Sedomat 8010 can be equipped with an internal I/O board and expanded with two internal SedoIO boards. External SedoIO modules can be connected via bus connection. Having a 10.1" touch display, it offers an easy operation of the modern user interface.

## Sedomat 8015

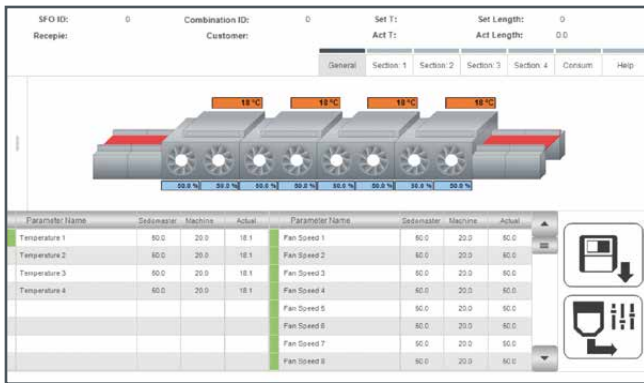
The Sedomat 8015 can be equipped with an internal I/O board and expanded with four SedoIO boards. External SedoIO modules can be connected via bus connection. The big 15.4" touch display offers a perfect operation and control of all types of machines.



Sedomat 8007 ▲



Sedomat 8010 ▲



## Continuous machine

The Sedomat 8000 series is optimized for use on textile finishing machines. The Sedomat 8015 offers a big user interface and is the ideal choice for control and supervision of machines.

## Data acquisition

The Sedomat 8000 series can be used for data acquisition or as a production client for SedoExpert. RFID or NFC support offers the perfect precondition.



▲ Sedomat 8015

## Specifications

Bus system: CANopen®

Optional: PROFIBUS DP®, Modbus RTU

Optional: internal I/O board with 16 dig. I/O,  
2 counters, 2 analog inputs, 2 analog outputs

IoT: MQTT, OPC UA

RS232 and RS485 interface

2 Ethernet RJ45,

2 USB port (one is USB 3.0)

Onboard WiFi

Optional: internal RFID/NFC

1 free mPCIe slot for extension (e.g. SIM card)

1 free mSATA slot

IP67

Power supply: 24V DC, 1.0A

Ambient temperature: 0 - 60 °C (32 - 140 °F)



▲ Rückseite Sedomat 8010

### Sedomat 8007:

7" capacitive touch display;

Dimensions: 218 x 160 x 65 mm ( wxhxd)

Panel cut out: 203 x 147 mm (wxh) ± 1mm

### Sedomat 8010

10,1" capacitive touch display

Optional: 2 internal SedoIO boards

Dimensions: 285 x 216 x 65 mm (wxhxd)

Panel cut out: 270 x 196 mm (wxh) ± 1mm

### Sedomat 8015

15,4" capacitive touch display

Optional: 4 internal SedoIO boards

Dimensions: 483 x 266 x 65 mm (wxhxd)

Panel cut out: 442 x 249 mm (wxh) ± 1mm

Head office:  
**Sedo Treepoint GmbH, Germany**  
Neuwies 1, D-35794 Mengerskirchen  
Phone: + 49 6476 31-0, Fax: +49 6476 31-31  
sedo@sedo-treepoint.com

Sedo Treepoint, Switzerland  
Phone: + 41 43 488 11 88, Fax: +41 43 488 11 89  
switzerland@sedo-treepoint.com

Sedo Treepoint, Belgium  
belgium@sedo-treepoint.com

Sedo Treepoint, China  
china@sedo-treepoint.com

Sedo Treepoint, India  
india@sedo-treepoint.com

Sedo Treepoint, Singapore  
singapore@sedo-treepoint.com

Sedo Treepoint, USA  
usa@sedo-treepoint.com

Technical specifications are subject to change without prior notice.